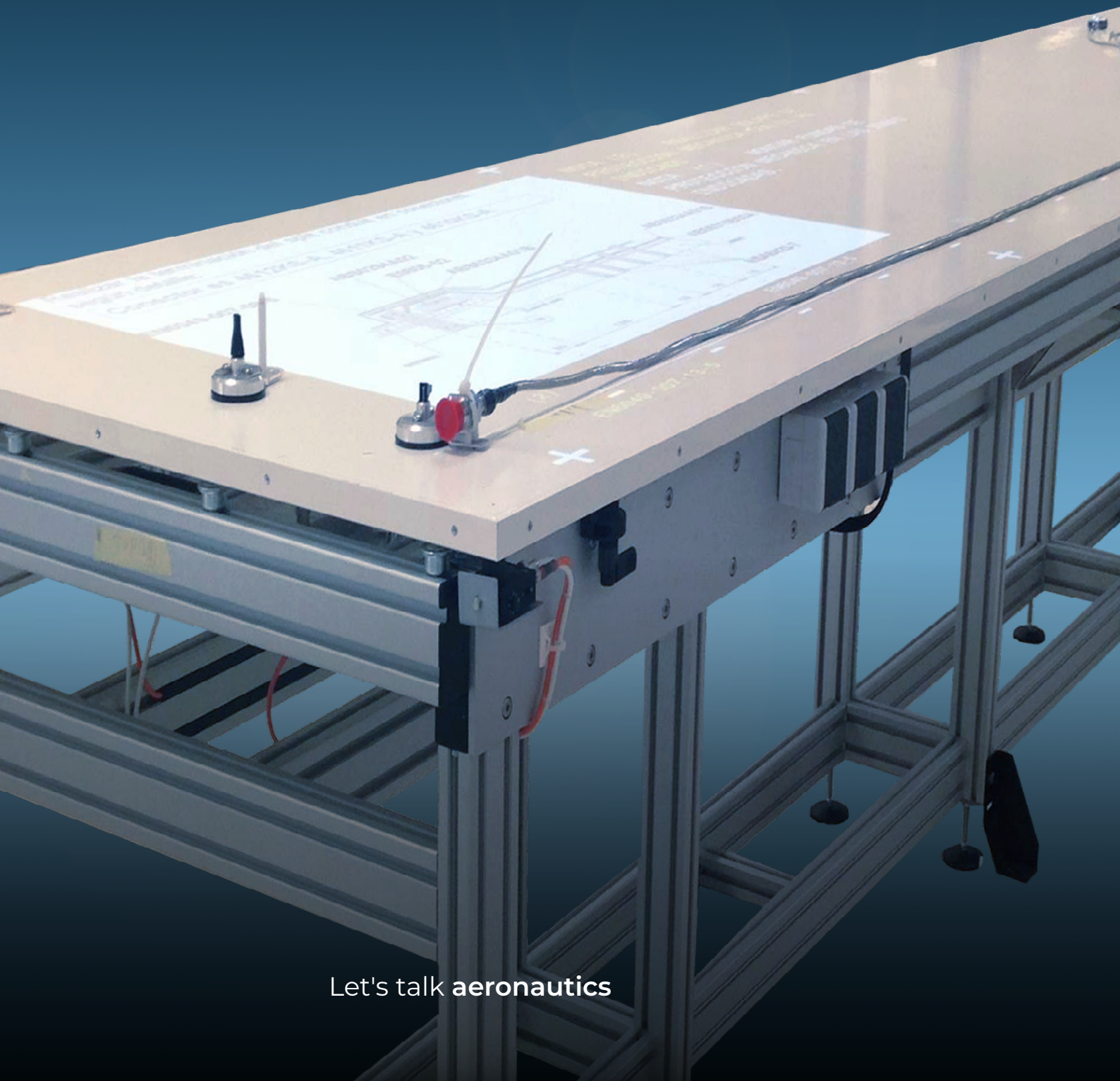




AERTEC

→ i-Workbench

Fully deployed and operative
Industrial Production System



Let's talk **aeronautics**

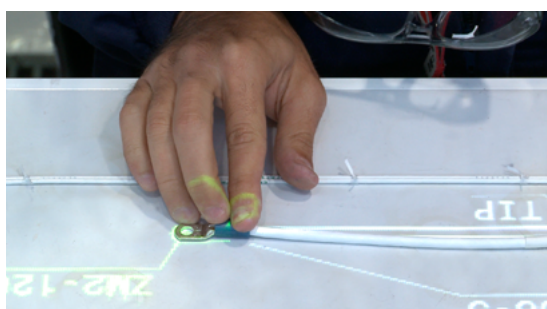
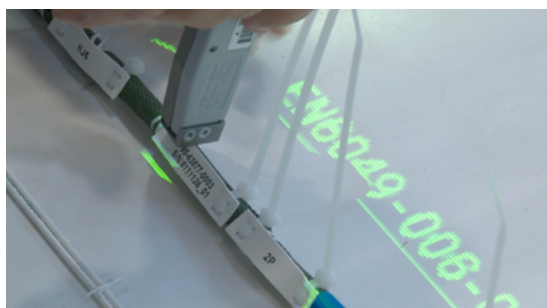


i-Workbench

Fully deployed and operative Industrial Production System

Lean electrical harness manufacturing system

i-Workbench simplifies, enhances and speeds up cable manufacture providing direct access to the workstation's information system through digital interactive production orders.



Overhead optical projectors

Low visual fatigue for operators



- ➔ Fully digitalised process and Smart Factory compliant
- ➔ Interactive equipment
 - ↪ Overhead optical projectors
 - ↪ Operator tablets
 - ↪ Barcode reader and Bidi
- ➔ Smart interactive software for full deployment in the manufacturing process:
 - ↪ Dynamic illumination
 - ↪ Projection of supporting data: standards, models, database info and diagrams/drawings
 - ↪ Quality record storage and analysis
 - ↪ Production control activity in real time
 - ↪ Dynamic software with incident display system

Industrialised system

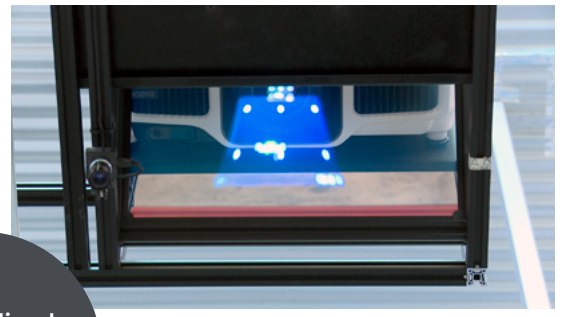


Highly-experienced engineers with thorough knowledge about methods, processes and tools

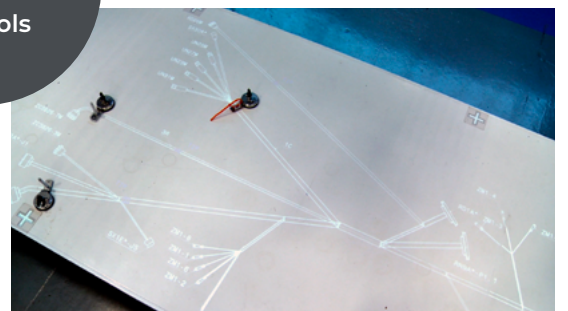
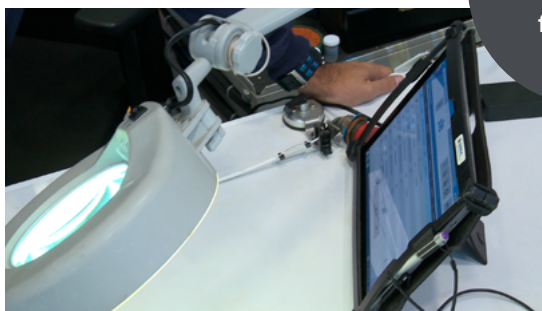
- ➔ Easy and immediate introduction of design changes to enable an extremely low time-to-market with little or no scrap material
- ➔ Designed for the operator:
 - System developed in teamwork with the shop floor operators
 - Low visual fatigue: images are reflected directly on the board from the overhead optical projectors with ultraviolet filters, avoiding radiation effects on the eyes
 - Automatic calibration through photoelectric optics and sensors
 - Progressive and interactive data display enable low training/experience requirements

Benefits

- i-Workbench is a smart factory industrial mean
- Extraordinary cost savings: reduced preparation and touch times; fully synchronised data set; right-first-time
- Time saving during development: easy incorporation of changes
- Robust hardware



Ruggedised
board
for tools



Projection of drawings on a 1:1 scale



Image format 5x1 m scalable up to 20 m



Non-interpolated actual resolution (1 mm)



Interactivity with user



i-Workbench

integrated by AERTEC

An optimum solution for
efficient cable manufacturing
improving cost, quality and speed



AERTEC

aertecsolutions.com

EUROPE
LATIN AMERICA
MIDDLE EAST
NORTH AMERICA

T. +34 95 10 10 200
info@aertecsolutions.com



EUROPE

SPAIN

MALAGA
Avda. Juan López de Peñalver, 17
Parque Tecnológico de Andalucía
(29590) Málaga

SEVILLE
C/ Wilbur y Orville Wright, 31
Parque Tecnológico Aeroespacial
Aerópolis (41300) La Rinconada
Sevilla

MADRID
Parque Empresarial La Carpetania
Edificio Charmex
C/ Miguel Faraday, 20
(28906) Getafe - Madrid

BARCELONA
Aeropuerto de Barcelona-El Prat
Bloque Técnico, 1º Planta Of. 57
(08820) El Prat del Llobregat
Barcelona

UNITED KINGDOM

CHESTER
Rossmore Business Village
10 Inward Way, Unit 4
Ellesmere Port / Chester
CH653EY

GERMANY

HAMBURG
Hein-Saß-Weg 24
21129 Hamburg

FRANCE

TOULOUSE
In situ Business Center
Batiment Socra
17 Av Didier Daurat
31700 Blagnac

LATIN AMERICA

COLOMBIA

BOGOTA
C/ 93B, numero 19-35
Oficina 201
(110221) Bogotá D.C.

MIDDLE EAST

UNITED ARAB EMIRATES

ABU DHABI
P.O. Box 2313, Business Centre-01
Abu Dhabi Airports Free Zone

NORTH AMERICA

UNITED STATES

DELAWARE
251 Little Falls Drive
Wilmington, DE 19808
New Castle County

